



Lapponia

NUOVO
COLLEZIONE

Contents

Lapponia houses are made with respect for tradition	4	Nuovo 277	6 – 7	Nuovo 144	16 – 17	Modern construction	26
Lapponia Nuovo – concepts from the designer	5	Nuovo 198	8 – 9	Nuovo 455	18 – 19		
		Nuovo 197	10 – 11	Nuovo 418	20 – 21	Partners	27
		Nuovo 194	12 – 13	Nuovo 307	22 – 23		
		Nuovo 171	14 – 15	Nuovo 251	24 – 25		





Lapponia houses are made with respect for tradition

Decades of experience making use of new technology

Building with wood is based on traditions in Finland going back hundreds of years, during which the tools, methods and knowledge utilized in woodworking have developed incredibly. The construction of log homes does require exceptional precision and experience. The thermolog structure solution developed by Lapponia House represents the newest technology in log house building. We've already been building modern thermolog homes for almost thirty years. In our thermolog structures, Finnish wooden and log home construction traditions and experience in contemporary structural solutions and production technology are merged.

A successful solution for our customers

The appearance of a log house suits the landscape, regardless of whether residential housing or leisure home areas are concerned. Every year, thousands of families realize their dreams of log house living by having the homes additionally insulated for warmth and in a manner that saves energy. Amongst these warm, insulated log home alternatives, the Lapponia thermolog solution has risen to become one of the most popular ways to build a warm log house. Similarly, Lapponia houses function under hot and humid conditions equally well in insulating them from the heat.

An environmentally friendly and economical log house solution

During the entire history of Lapponia House, the ecology and energy-friendliness of thermologs have been well ahead of their time. Thousands of satisfied customers are able to enjoy high-quality thermolog accommodation, in which the draught- and trouble-free character of the structure and the minimal need for energy speak for the superiority of thermologs as a sensible structural solution.

Lapponia's thermolog homes do not sag, nor do their wall structures warp or crack. Those who live in our houses have fewer maintenance tasks to perform, leaving more time to enjoy life.

Erecting a thermolog home is faster than assembling the base of a solid log house and additional insulation on the worksite. The walls of a Lapponia thermolog house are made at the plant into large elements which are quick and easy to assemble at the worksite. The external walls of a mid-sized house and the gable on top of them can be installed even in only a couple of days. The elements contain thermal insulation and windows as well as inside and outside cladding, all prefabricated at the plant.

Note! The photos on the brochure are taken of the houses made for clients. The houses on the photos may differ from the drawings on this brochure, which are made according to the standard models.

Area measures have been calculated according to Finnish standards and are indicative. The gross floor area is calculated according to external dimensions of the house. In the brochure, this area also includes the areas upstairs that are less than 1,6 m high. Terraces and balconies are also included in the total area. The living floor area is calculated according to interior dimensions of the rooms, excluding areas upstairs that are less than 1,6 m high.

Lapponia Nuovo – concepts from the designer



The basis for the Lapponia Nuovo-range is spacious, bright and generously proportioned rooms. Demanding lifestyles require homes with flexibility to cater for changing individual needs. The models in the Nuovo-range accommodate these changes for living and hobbies in a natural way.

The room layout is functional, the more private rooms forming around the open entity of kitchen, dining and living room. Interiors are designed with modern simplicity in mind, wood in its different shapes combined with glass, steel and carefully chosen timeless colour schemes.

Windows to the floor in the main areas enhance the lightness of the rooms and allow a feeling of connection to the surroundings nature. Also the terraces and balconies help to enclose the building to the elements giving both shelter and peaceful space when needed.

Bathrooms and saunas are also designed with space and light in mind. Especially in the bathrooms sunlight has been taken into consideration as a source of illumination and the quality furnishing is stylishly simple to suit the taste of the demanding user.

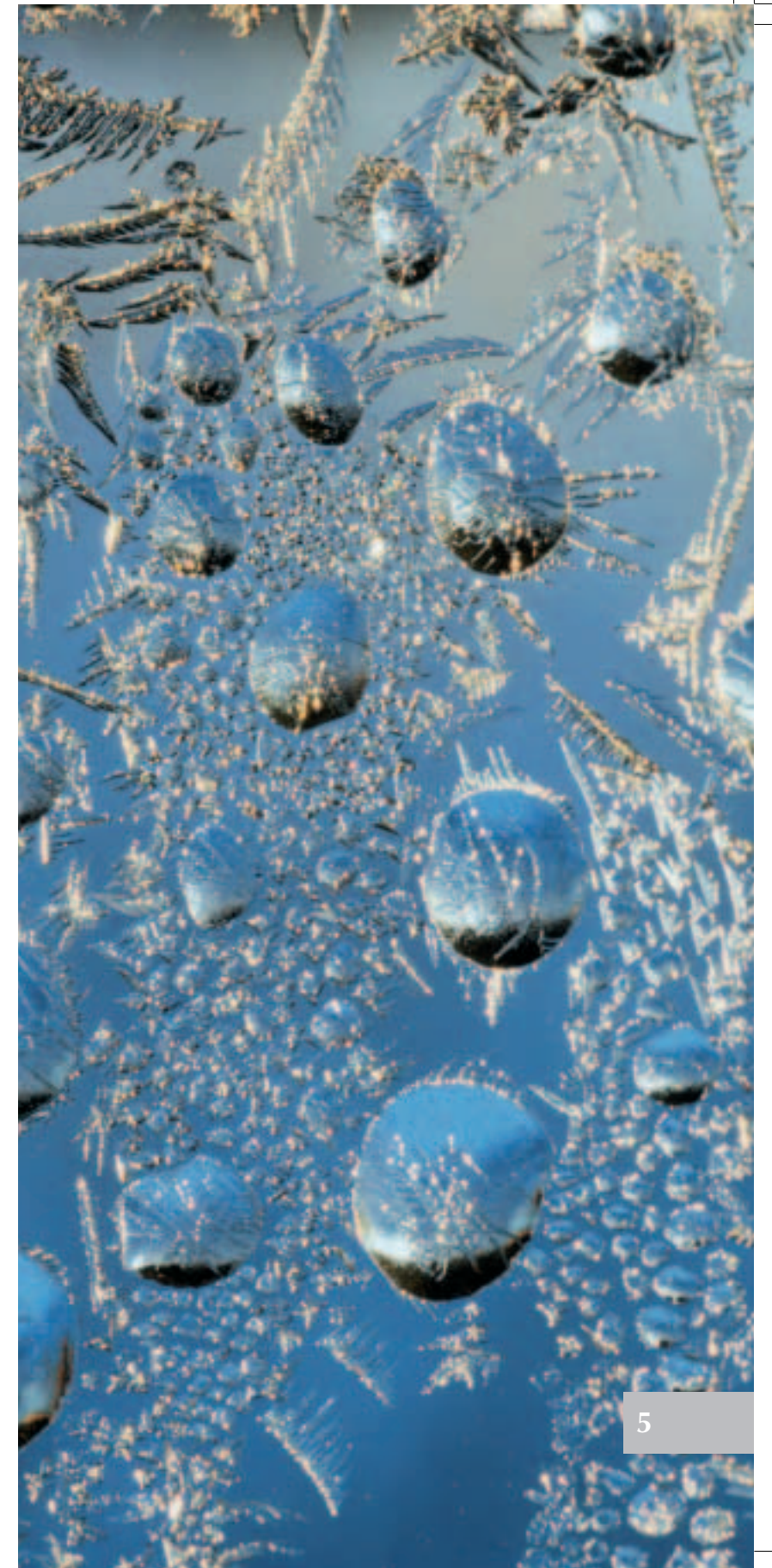
Tero Ahava, Architect SAFA



The modern look of Nuovo - house collection gives the freedom to realise many kinds of interior decorations. Variety of styles can be created by different choices in surface materials and equipment for kitchen and washing facilities.

The personal style of the residents may be expressed by using stone surfaces and wood in different colours. The functionality of the spaces can be emphasized by lighting. The Nuovo - collection's alternatives are perfect for single family house as well as leisure home needs.

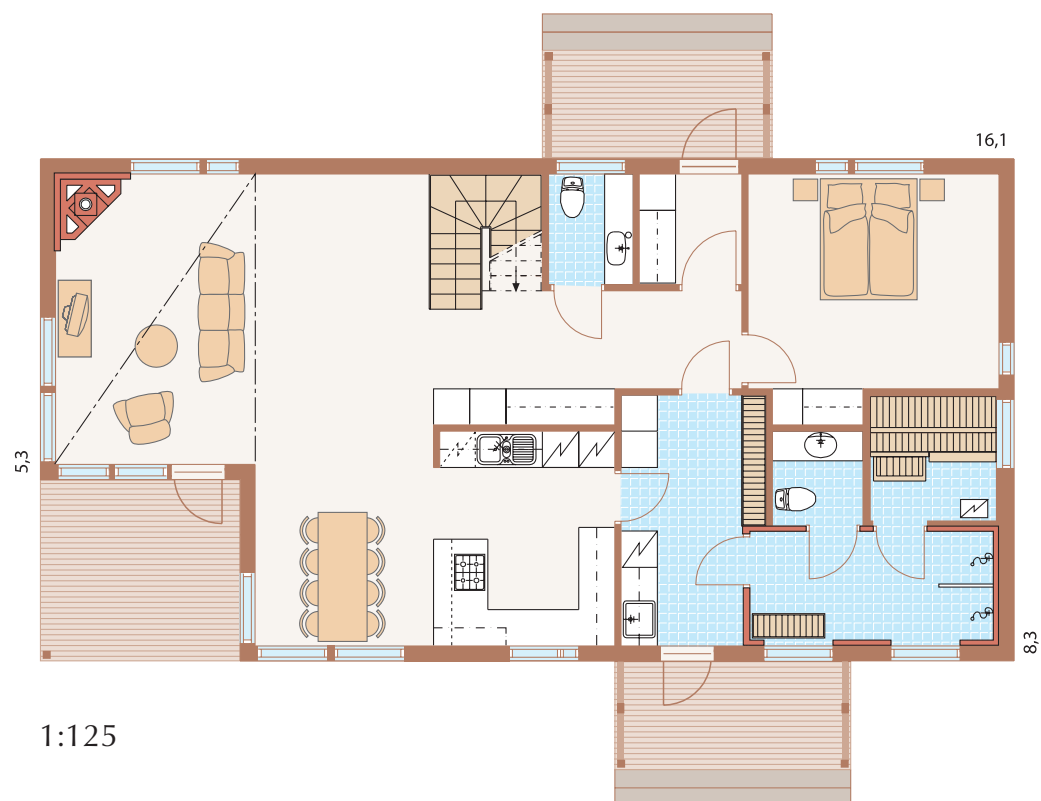
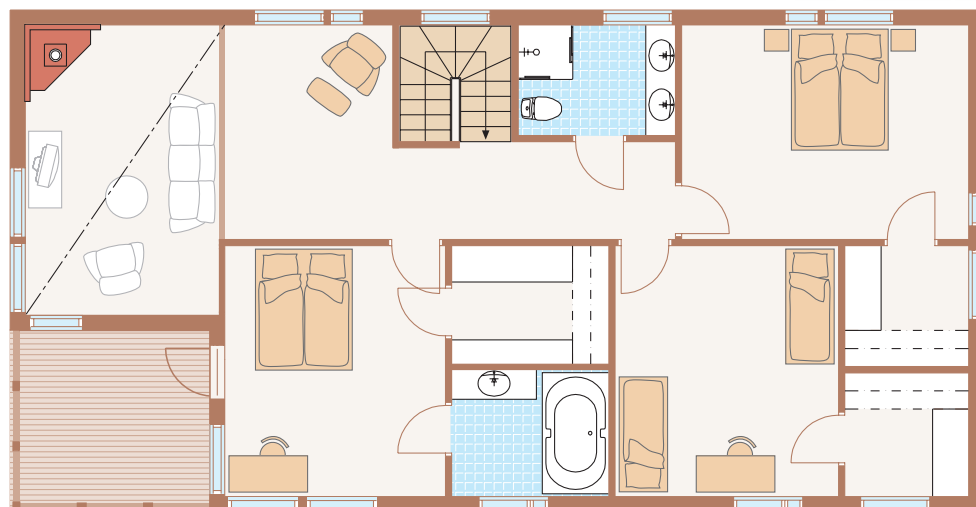
Anne Kosonen, Interior designer





Downstairs	124,5 m ²
Upstairs	120,5 m ²
Gross floor area	245,0 m ²
Living floor area	220,0 m ²
Terrace	22,5 m ²
Balcony	9,0 m ²
Total area	276,5 m ²

NUOVO 277



1:125

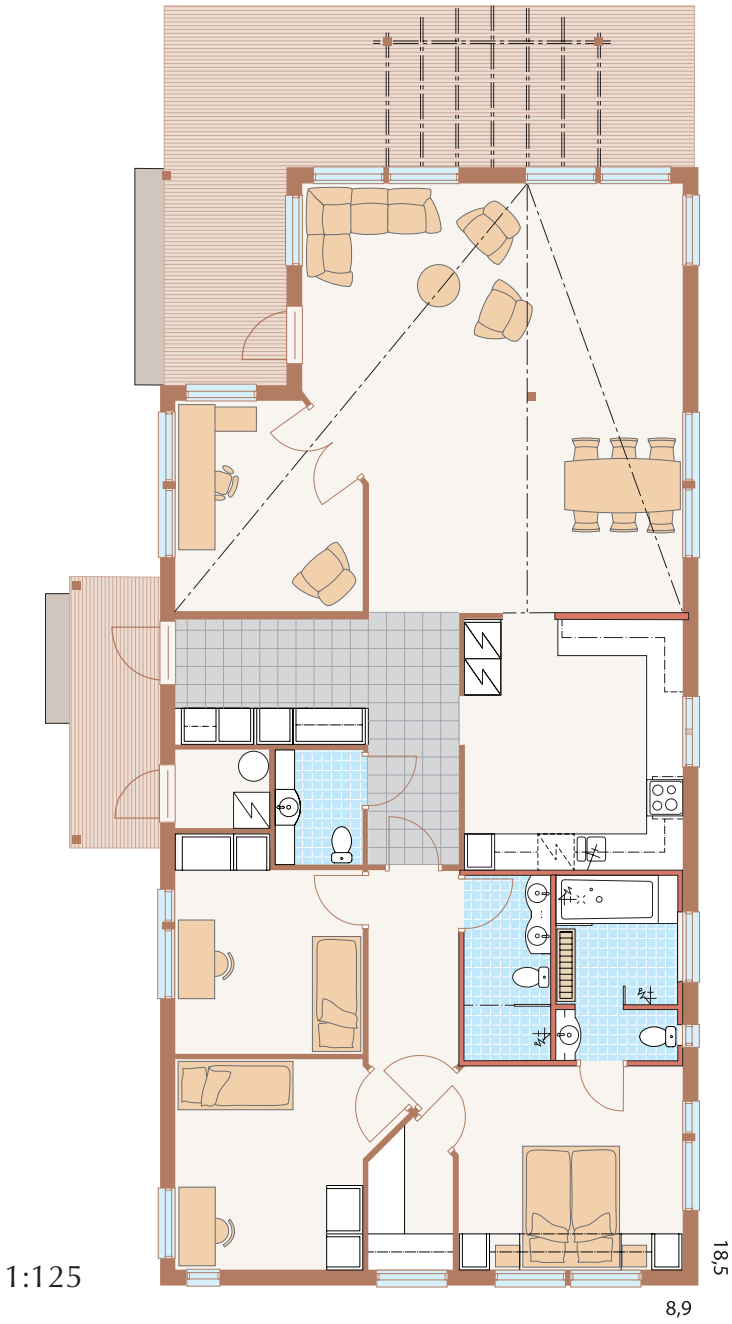


7



Gross floor area 157,5 m²
Living floor area 141,0 m²
Terrace 40,0 m²
Total area 198,0 m²

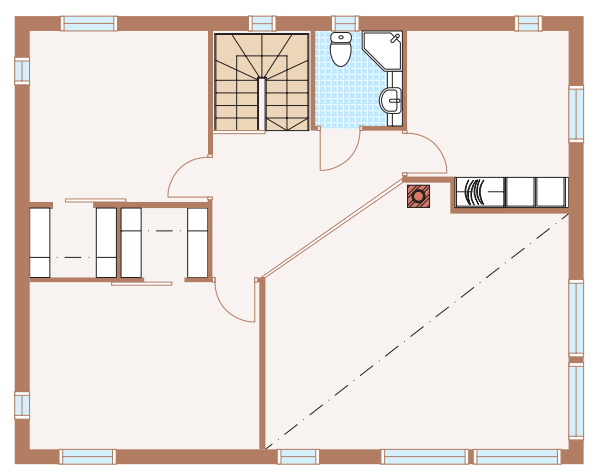
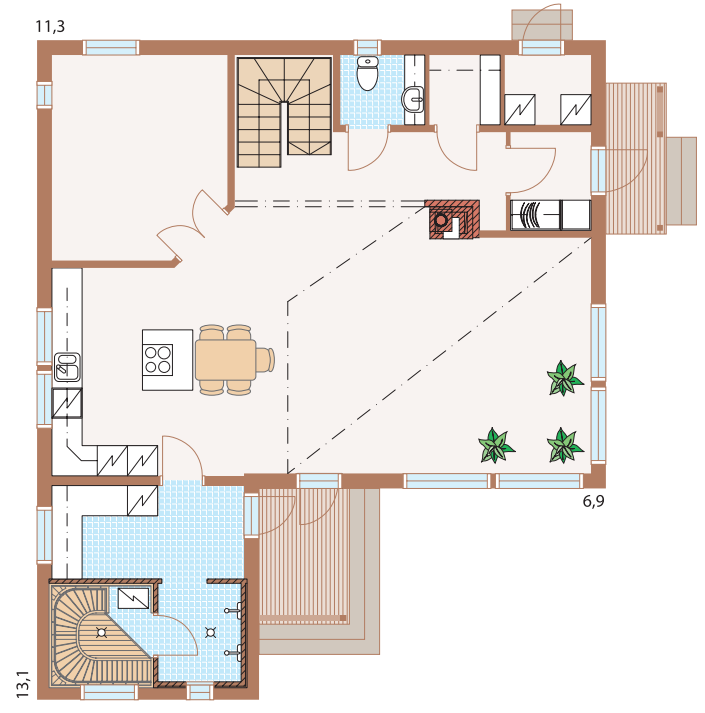
NUOVO 198





Downstairs	119,5 m ²
Upstairs	69,0 m ²
Gross floor area	188,5 m ²
Terrace	8,5 m ²
Total area	197,0 m ²

NUOVO 197



1:150





Gross floor area	175,5 m ²
Living floor area	161,0 m ²
Terrace	18,5 m ²
Total area	194,0 m ²

NUOVO

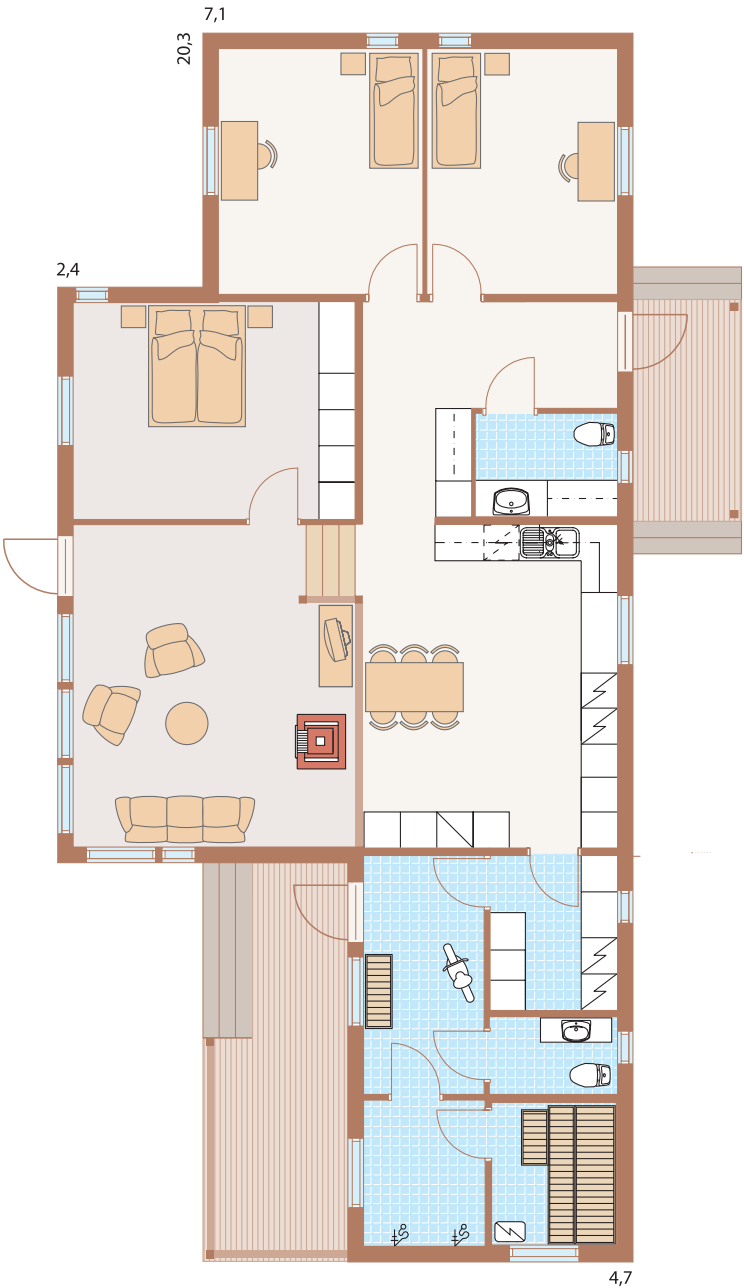
194
 194





Gross floor area 151,5 m²
Living floor area 136,5 m²
Terrace 20,0 m²
Total area 171,5 m²

NUOVO 171



1:125





Gross floor area 120,5 m²
Living floor area 108,5 m²
Terrace 23,5 m²
Total area 144,0 m²

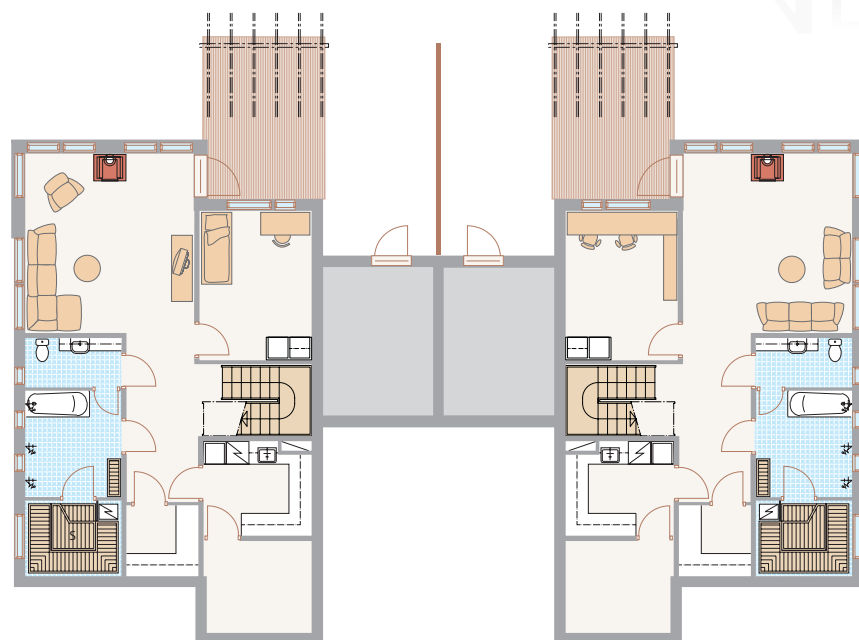
NUOVO 144





Downstairs $93,5 + 93,5 = 187,0 \text{ m}^2$
 Upstairs $111,0 + 111,0 = 222,0 \text{ m}^2$
 Gross floor area $204,5 + 204,5 = 409,0 \text{ m}^2$
 Living floor area $164,0 + 164,0 = 328,0 \text{ m}^2$
 Terrace $17,0 + 17,0 = 34,0 \text{ m}^2$
 Balcony $6,0 + 6,0 = 12,0 \text{ m}^2$
 Total area $227,5 + 227,5 = 455,0 \text{ m}^2$

NUOVO 455



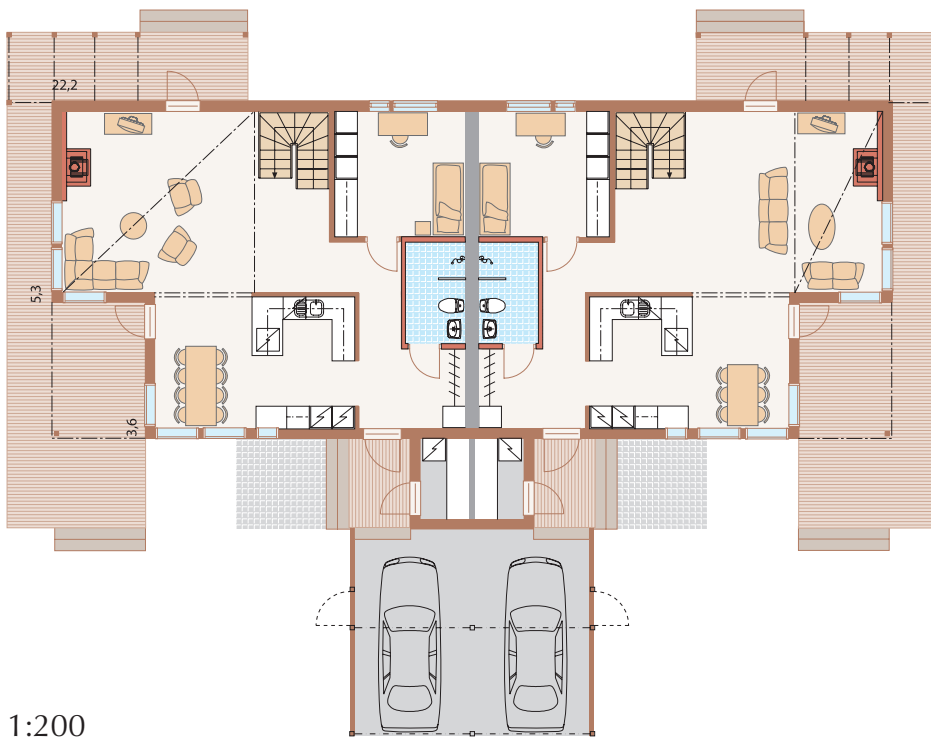
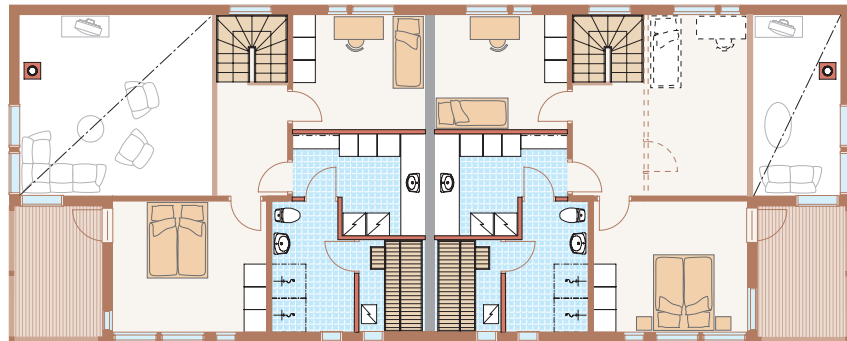
1:200





Downstairs	$93,75 + 93,75 = 187,5 \text{ m}^2$
Upstairs	$72,0 + 72,0 = 144,0 \text{ m}^2$
Gross floor area	$165,75 + 165,75 = 331,5 \text{ m}^2$
Living floor area	$137,75 + 137,75 = 275,5 \text{ m}^2$
Terrace	$34,5 + 34,5 = 69,0 \text{ m}^2$
Balcony	$8,5 + 8,5 = 17,0 \text{ m}^2$
Total area	$208,75 + 208,75 = 417,5 \text{ m}^2$

NUOVO 418



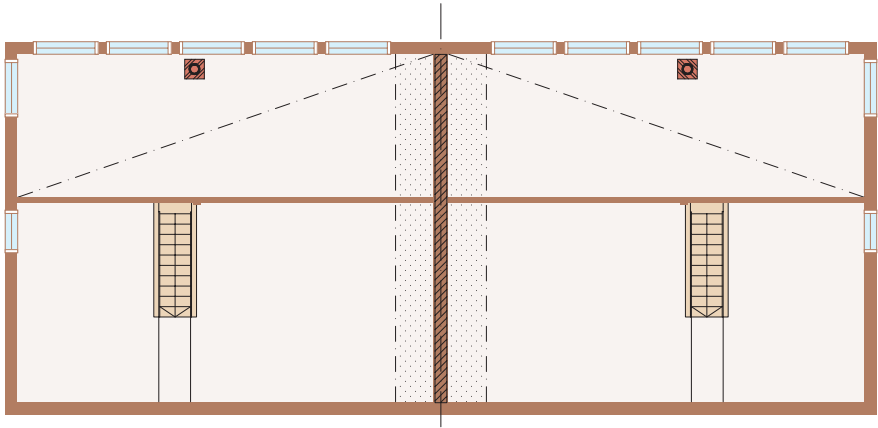
1:200



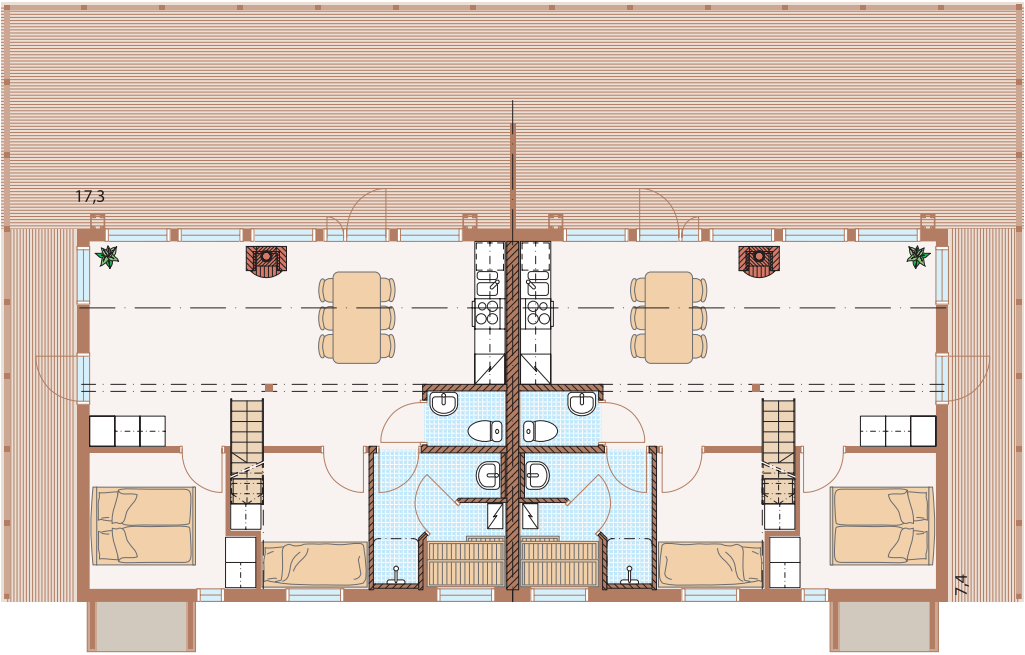


Downstairs $64,0 + 64,0 = 128,0 \text{ m}^2$
Loft $32,5 + 32,5 = 65,0 \text{ m}^2$
Gross floor area $96,5 + 96,5 = 193,0 \text{ m}^2$
Terrace $56,75 + 56,75 = 113,5 \text{ m}^2$
Total area $153,25 + 153,25 = 306,5 \text{ m}^2$

NUOVO 307



1:150

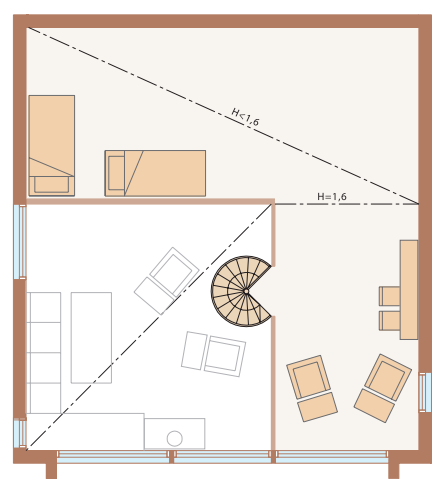




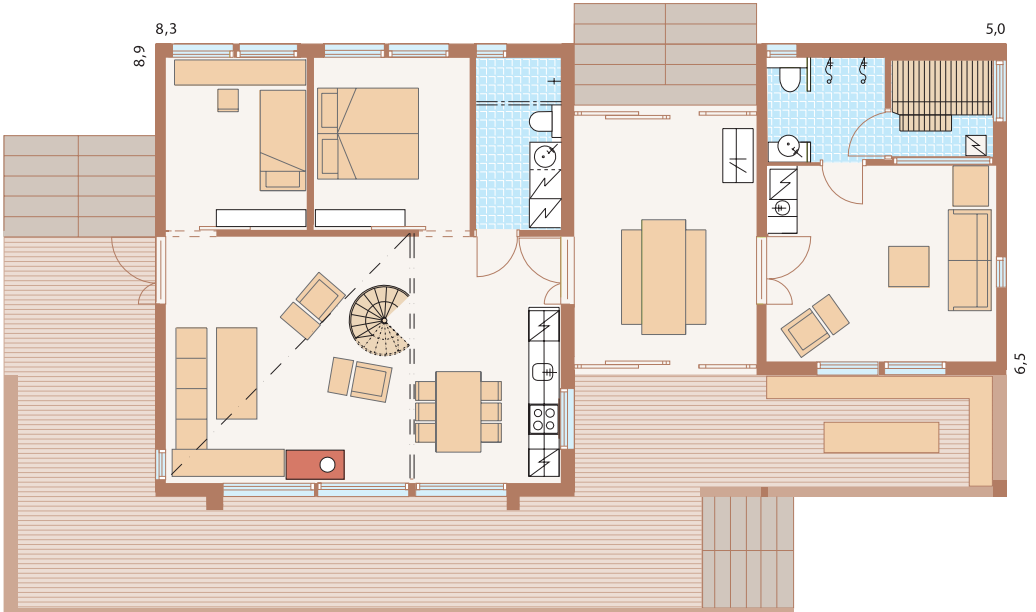
Downstairs	124,5 m ²
Upstairs	47,0 m ²
Gross floor area	171,5 m ²
Terrace	80,0 m ²
Total area	251,5 m ²

NUOVO

251
 321



1:150





Modern construction

Lapponia House has always been a forerunner as a supplier of log homes. We launched the first thermolog house on the market almost thirty years ago and advance our product continuously. We actively follow the new building regulations and continue to develop our own impressive collection.

Make your dreams come true!

The spirit of your home already comes to life during the planning stage. We aren't just the supplier of your house – we're a reliable partner throughout your building project. We provide service to you from the planning stage onwards – right through to building completion. Ask for more information from your Lapponia representative!

Partners

ISOVER
www.isover.fi

JELD-WEN
DOOR SOLUTIONS
www.jeld-wen.fi

 **kaski**
www.kaskipuu.fi

KATEPAL
www.katepal.fi

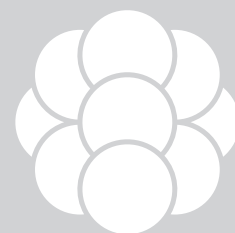
 **profin**[®]
www.profin.fi

RUUKKI
www.ruukkikoti.fi

SKAALA[®]
www.skaala.com

 **TIKKURILA**
www.tikkurila.fi

VELUX[®]
www.velux.com



Lapponia

LAPPONIA HOUSE OY

Export Office: Martinkyläntie 54, FIN-01720 VANTAA, Finland

Tel.: +358-9-7743 660, Fax: +358-9-7743 6633

e-mail: info@lapponiahouse.com

www.lapponiahouse.com